



# EIT Health

## Tools and enablers for innovation

*Blanca Jordán, ATOS Spain (ExCo Member, Spanish CLC Industrial Chair, Interim Innovation Director Spanish CLC, CrossChallenge C Chair Spanish CLC)*



The EIT is a body of the European Union

24 March 2015



**The Mission: EIT Health accelerates entrepreneurship and innovation in healthy living and active ageing, providing Europe's top talents with new opportunities and resources to the benefit of all citizens.**



# Where others see the patient we see the potential

Unhealthy lifestyles:  
Increase of chronic conditions such as  
diabetes and cardiovascular diseases

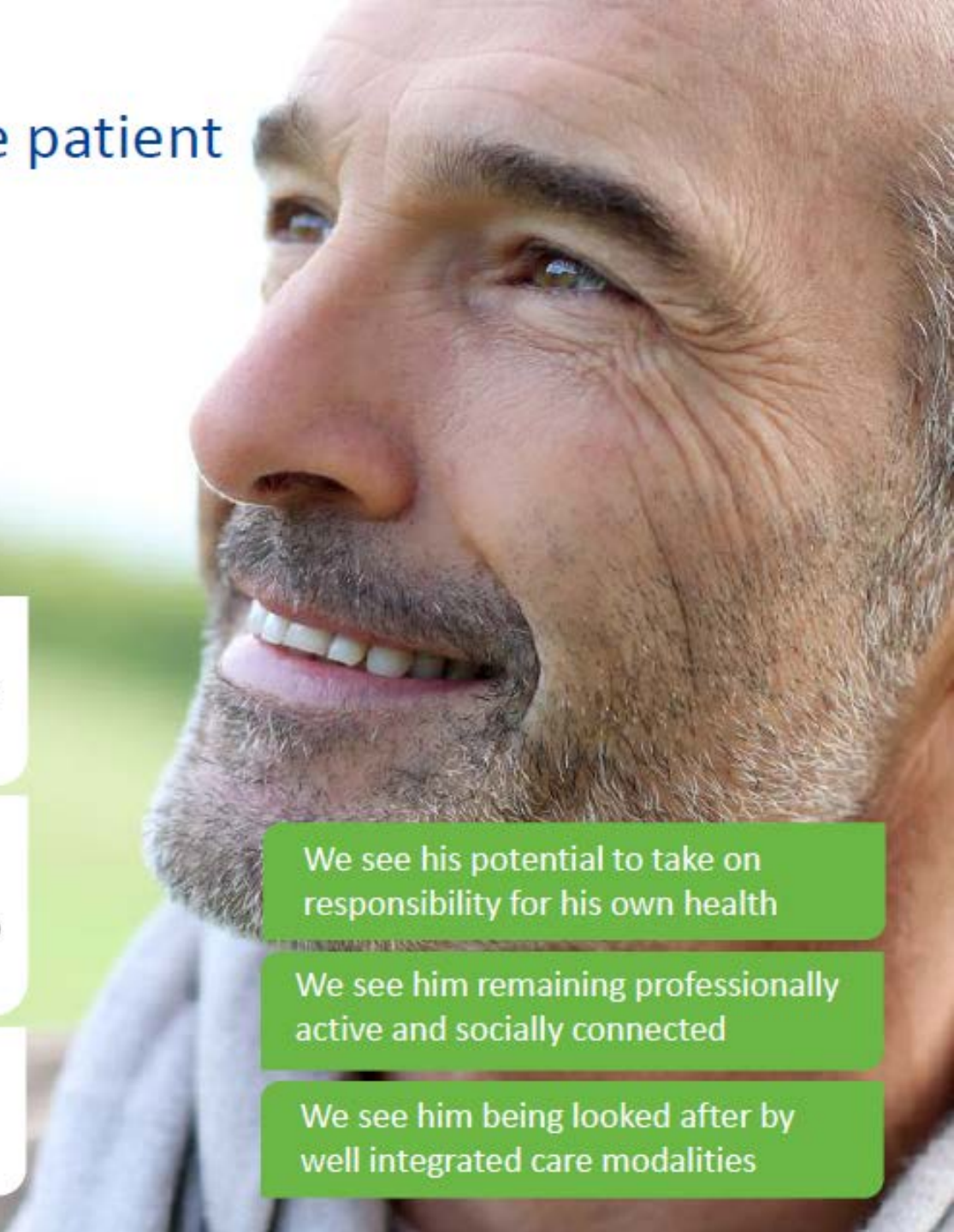
Frailty and functional loss:  
Remaining professionally active is  
in part an economic necessity but also  
the people's desire

Fragmented care systems:  
A lack of integration of healthcare  
providers

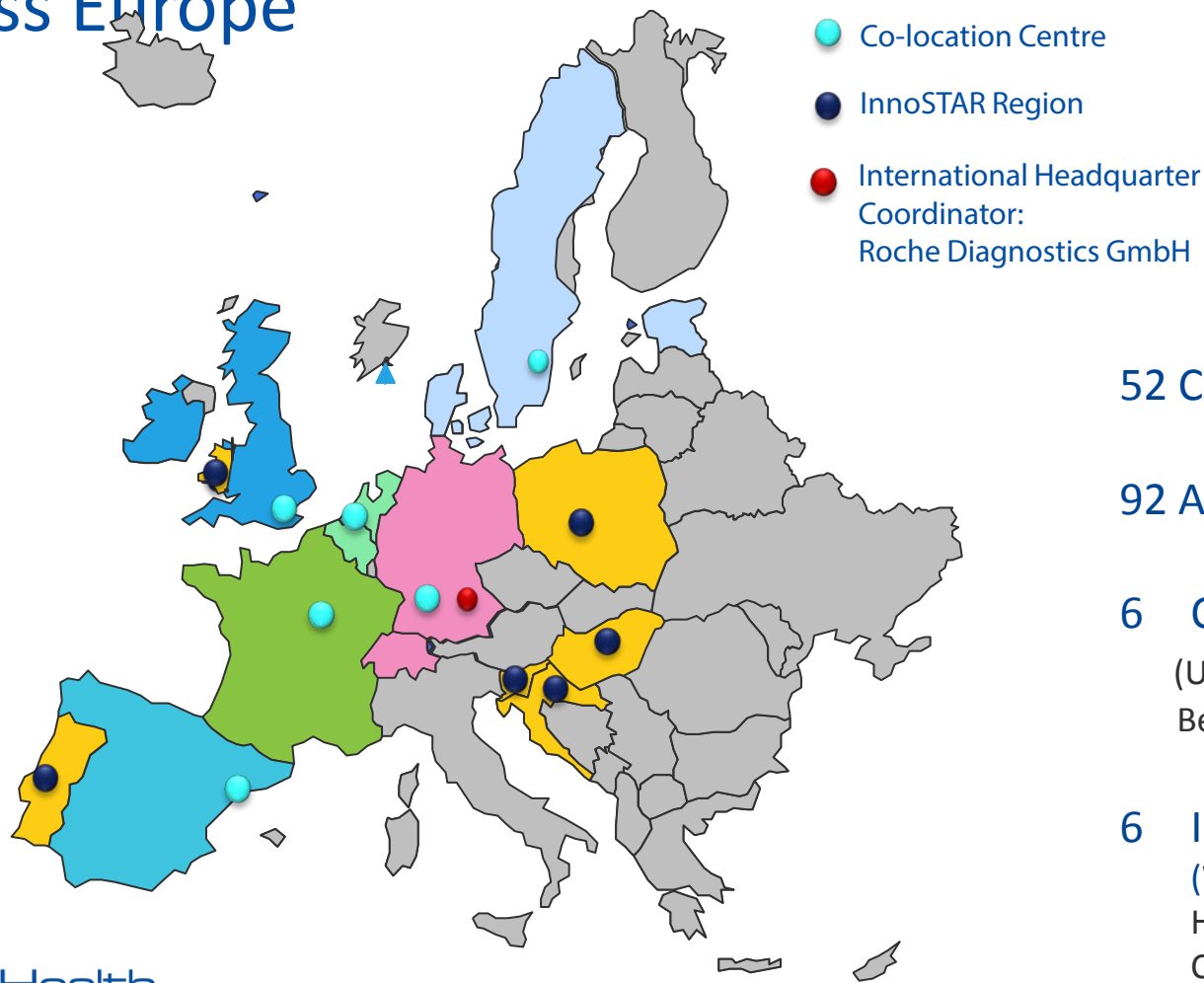
We see his potential to take on  
responsibility for his own health

We see him remaining professionally  
active and socially connected

We see him being looked after by  
well integrated care modalities



# Our KIC-Health consortium spans across Europe



52 Core Partners

92 Associated Partners

6 Colocations nodes


(UK, Sweden, Germany, Benelux, France, Spain)

6 InnoStars regions

(Wales, Portugal, Poland, Hungary, Slovenia, Croatia)

# European Institute of Innovation and Technology

- The EIT is the first EU initiative bringing together the three sides of the “knowledge triangle”: business (companies and SMEs), higher education institutions and research centres.
- The EIT aims to increase the cooperation and integration between higher education, business and research to facilitate the transition from:



Student to  
entrepreneur

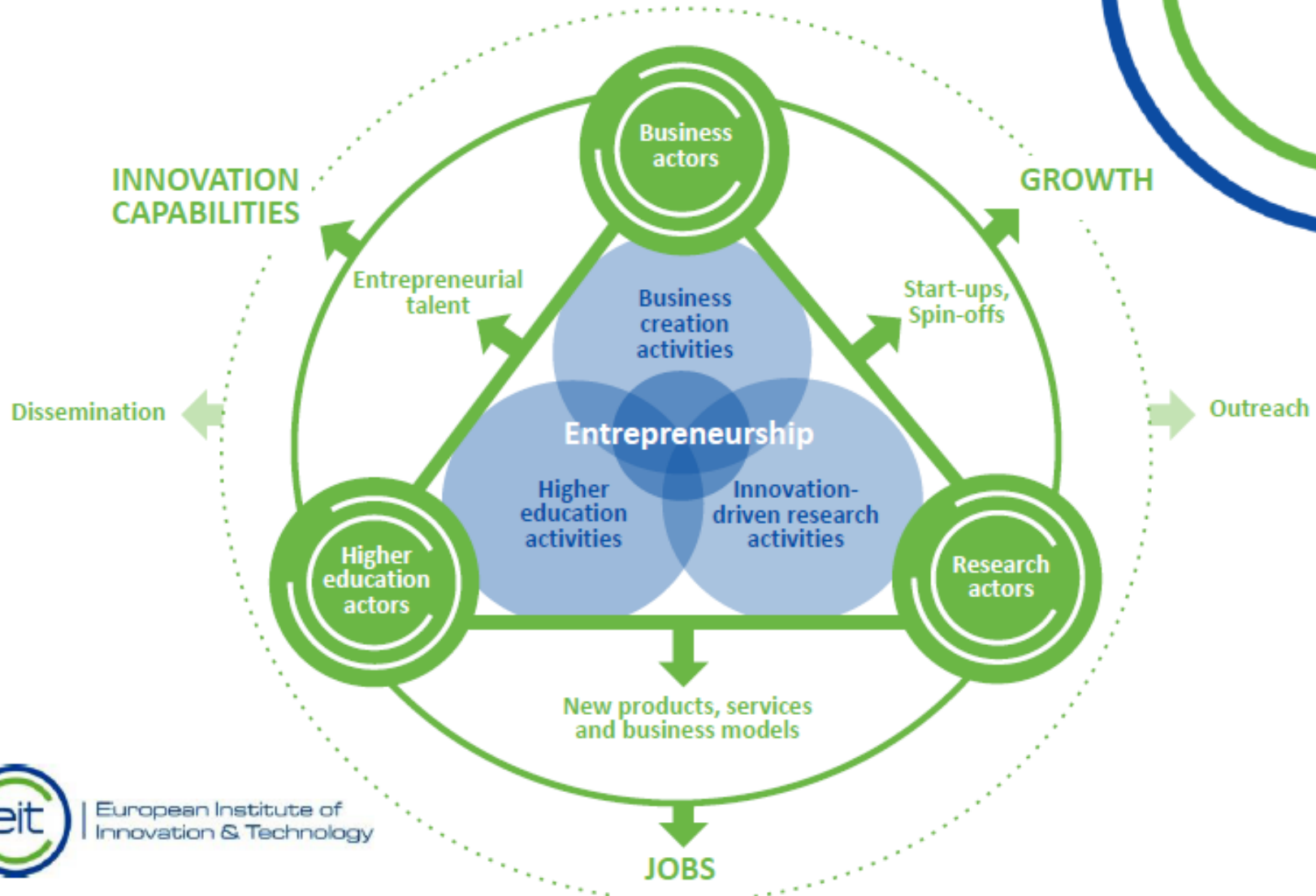
Idea to product

Lab to customer



European Institute of  
Innovation & Technology

# The EIT innovation model



European Institute of  
Innovation & Technology



# Knowledge and Innovation Communities

## The EIT's KICs are:

- Thematic innovation communities that develop innovative products and services, foster new business , encourage growth and nurture young entrepreneurial talent
- Characterised by a high degree of integration, a long-term perspective, efficient governance, the co-location model and the entrepreneurial culture
- Unique partnerships that increase Europe's capacity for innovation by bringing together leading companies, universities and research labs
- Driven by a pursuit of excellence



# KIC model – Business logic

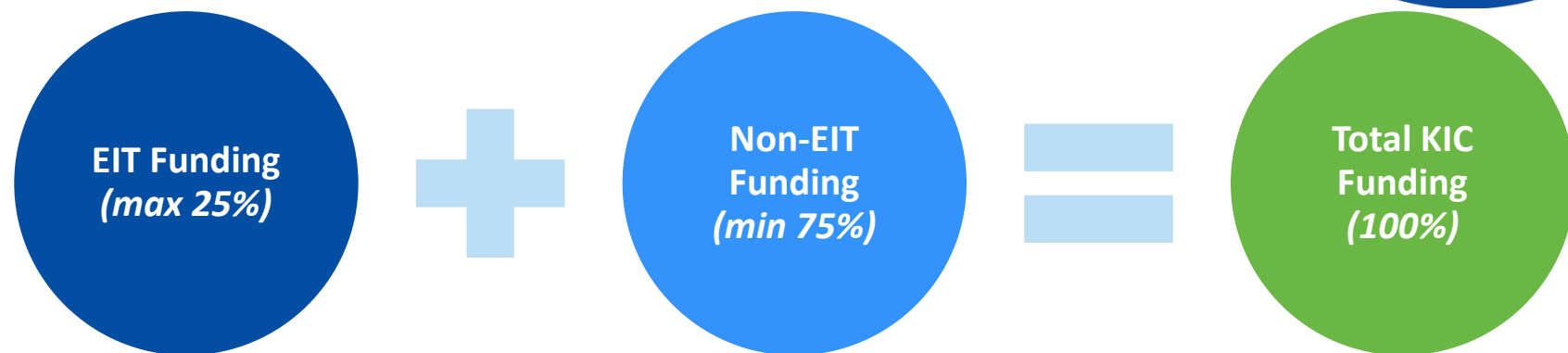
- **High degree of integration:** each KIC is an independent legal entity, gathering world-class KIC partners from the knowledge triangle based on a contractual relationship/partnership with the EIT
- **Long-term strategic approach:** each KIC is set up for a minimum of 7 years to eventually become self sustainable
- **Sufficient autonomy and flexibility:** to determine organisational structure and activities governed by a Board of KIC partner organisations
- **Effective governance:** run by a CEO and a lean management team at central and co-location level



# KIC model – Investment logic

- **Smart funding & high degree of commitment of partners:** EIT funding to KICs is max. 25% of their total budget over time with 75% to be attracted from other sources, both public and private
- **The co-location model:** each KIC consists of 5-6 world class innovation hot spots building and leveraging on existing European capacities
- **Results & high impact oriented activities:** KICs implement a Business Plan with measurable deliverables, results and impact
- **Culture:** KICs are shaped by strong entrepreneurial mind-sets and cultures

# Leveraging and pooling resources



Combining EIT and non-EIT funding to:

- Ensure **long-term involvement** of KIC partners
- Incentivise **financial commitment** from KIC partners
- **Catalyse** investment in innovation
- Other funding from a **variety of sources**:
  - National /Regional;
  - EU (non-EIT, e.g. FP7 or other H2020 grants or structural funds);
  - Private funding;
  - Own resources

# Our Tools and Enablers: Projects, Accelerator & Campus

## EIT Health Projects

will build on  
multidisciplinary  
collaboration

## EIT Health Accelerator

will support  
innovation and  
business

## EIT Health Campus

will become a  
brand for  
excellence in  
education

# Challenges are further broken down

## Promote Healthy Living

Self-management of health

Lifestyle intervention

Motivate active personal lifestyles

Metabolic Health

## Support Active Ageing

Workplace interventions

Overcoming functional loss

Ageing with a Healthy Brain

Mobility and independence throughout Life

## Improve Healthcare

Improving healthcare systems

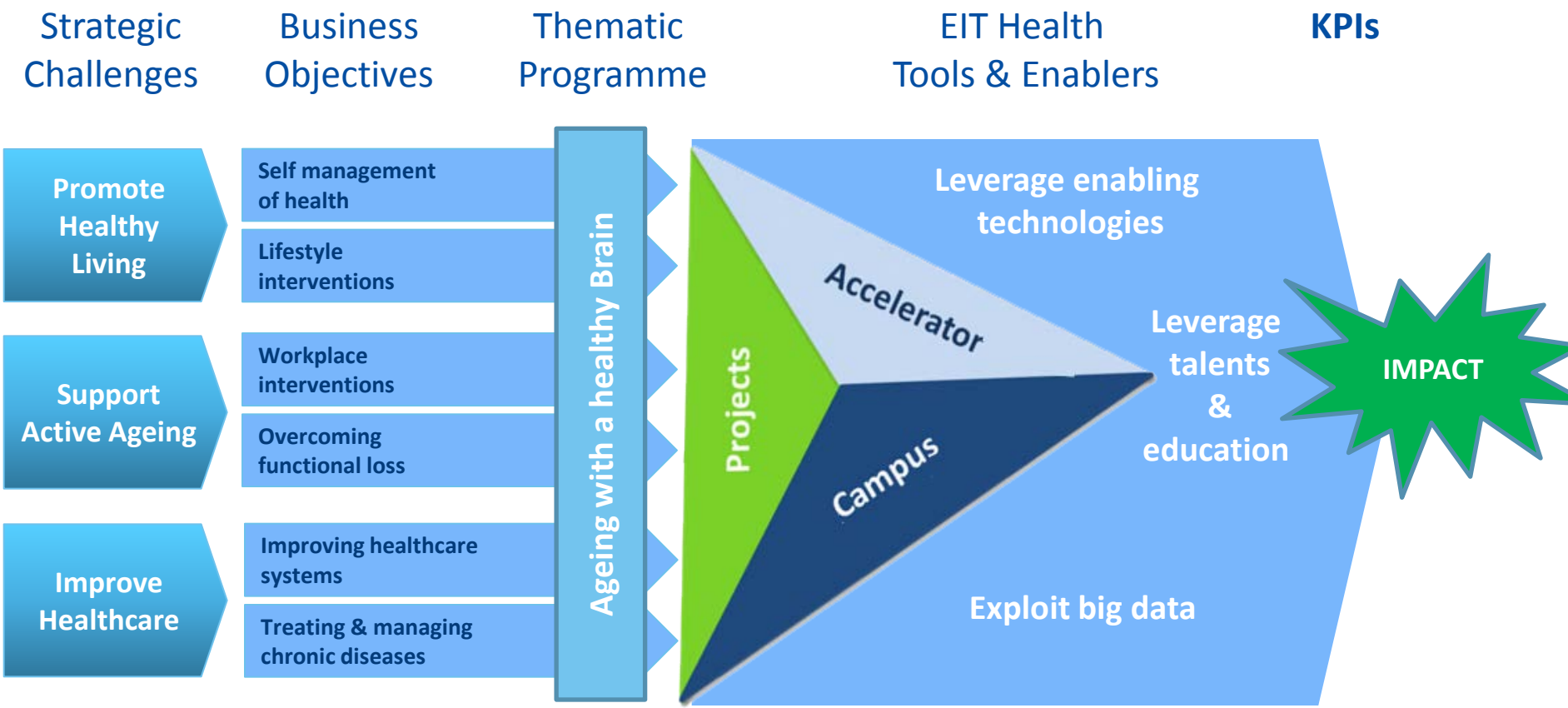
Treating and managing chronic diseases

Personalised Oncology and Integrated Cancer Care

Sustainable Continuum of Care to Support Active Living in Europe



# EIT Health: Healthy Living and Active Ageing



# Projects are funded variously

## **Innovation by Ideas**

collaborative projects selected in competitive calls that are “solution-driven” i.e. a potential solution has been identified that either capitalises on an opportunity or addresses a specific problem presented by demographic ageing of the population

## **Innovation by Design**

collaborative projects that are “needs-driven” and start from a recognised market need or societal problem

## **Head Start**

fast-track project opportunities with focus on SMEs and start-ups, funded to rapidly initiate activities



[eit.europa.eu](http://eit.europa.eu)



The EIT is a body of the European Union