

EIT Health: a powerful alliance for healthy living and active ageing



EIT Health is supported by the EIT,
a body of the European Union

Sylvie Bove | Barcelona | March 15, 2016

Innovation in Europe

- **Most EU research** funding & support is provided for early Technology Readiness Levels (TLR) 1-5
 - gap in funding for projects > TLR 6-9
 - lack of 'entrepreneur education'
- **The EIT** was founded to develop
 - solutions for rapidly emerging societal problems
 - products that meet the needs and desires of consumers
- **EIT Health** ensures the connection of education, research and business (knowledge triangle)
 - strengthens entrepreneurial education and support
 - supports innovative ideas and transformational business projects



EIT – an integral part of

HORIZON 2020



The EIT contributes to H2020 by addressing societal challenges via the integration of the knowledge triangle



H2020 has a budget of approx. € 80 billion for 2014 to 2020, out of which the EIT has been allocated € 2.4 billion



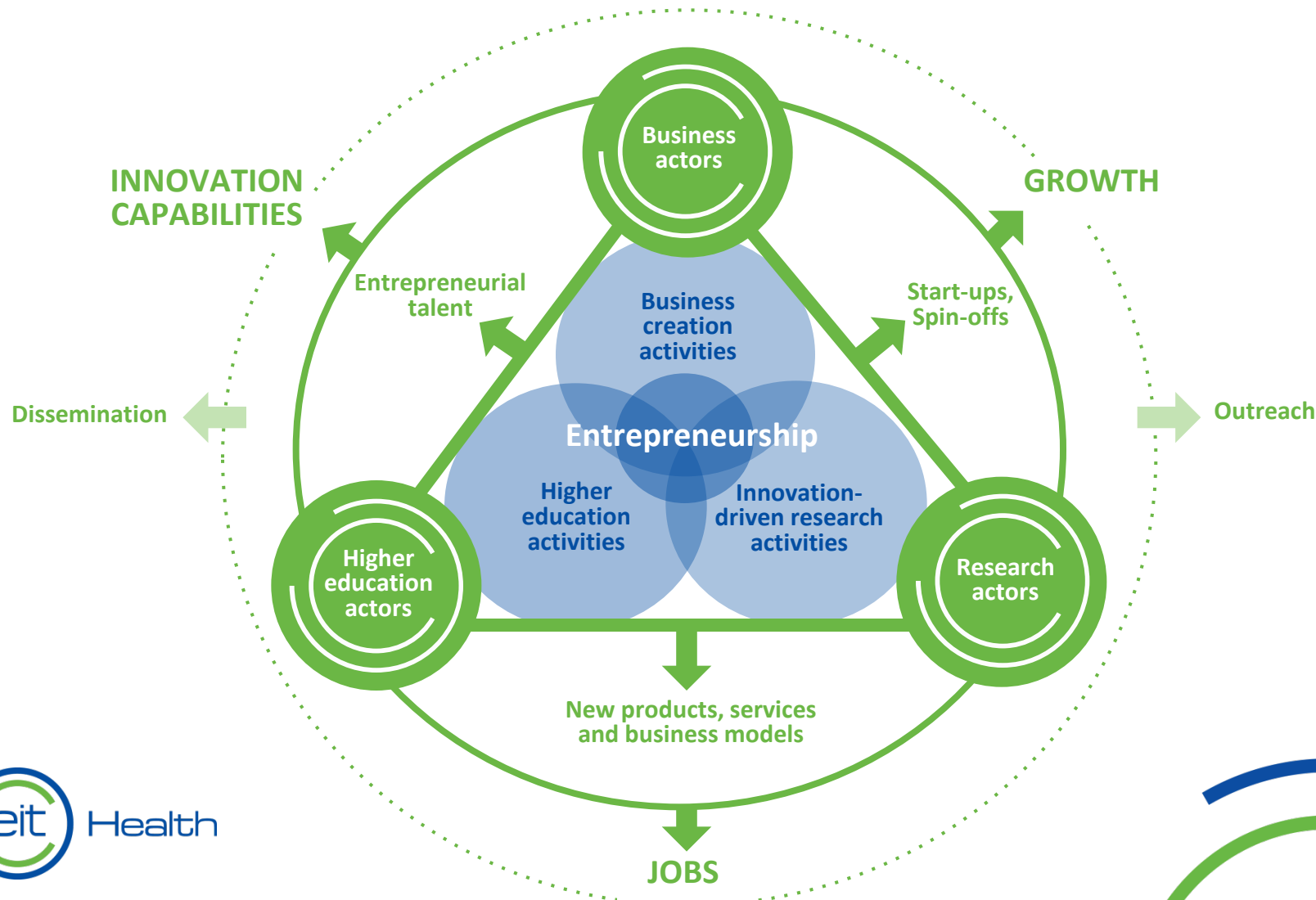
The EIT will further nurture synergies and complementarities across H2020 and its different initiatives



European Institute of
Innovation & Technology



The EIT innovation model



WHY?

Healthy living and active ageing

Europe's healthcare challenges



Societal changes

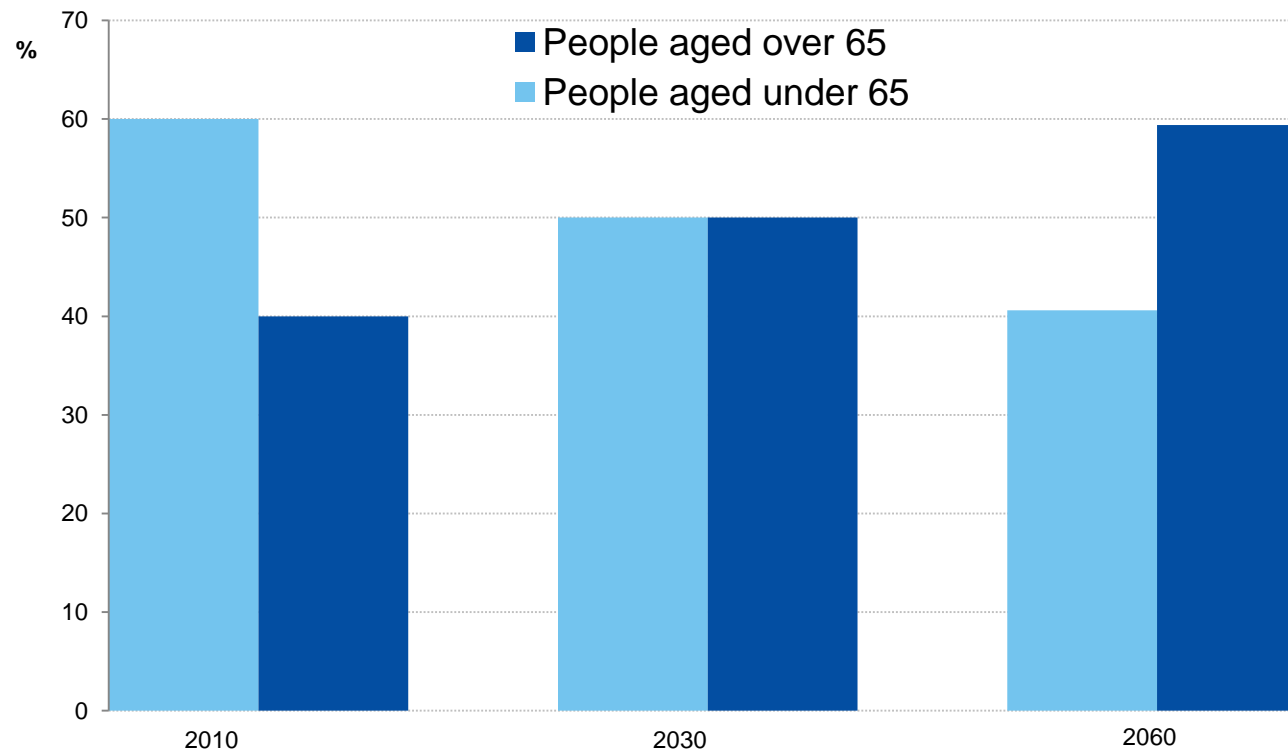
- Ageing population
- Downward trend in birth rates
- Increasing life expectancy by approx. 4-5 years per generation

Leading to

- A wider gap between active and inactive people, reducing the population within the labour force
- A larger number of older people in long-term care, e.g. due to cardiovascular disorders, diabetes or functional loss
- A dramatic increase in expenditures for health and social care

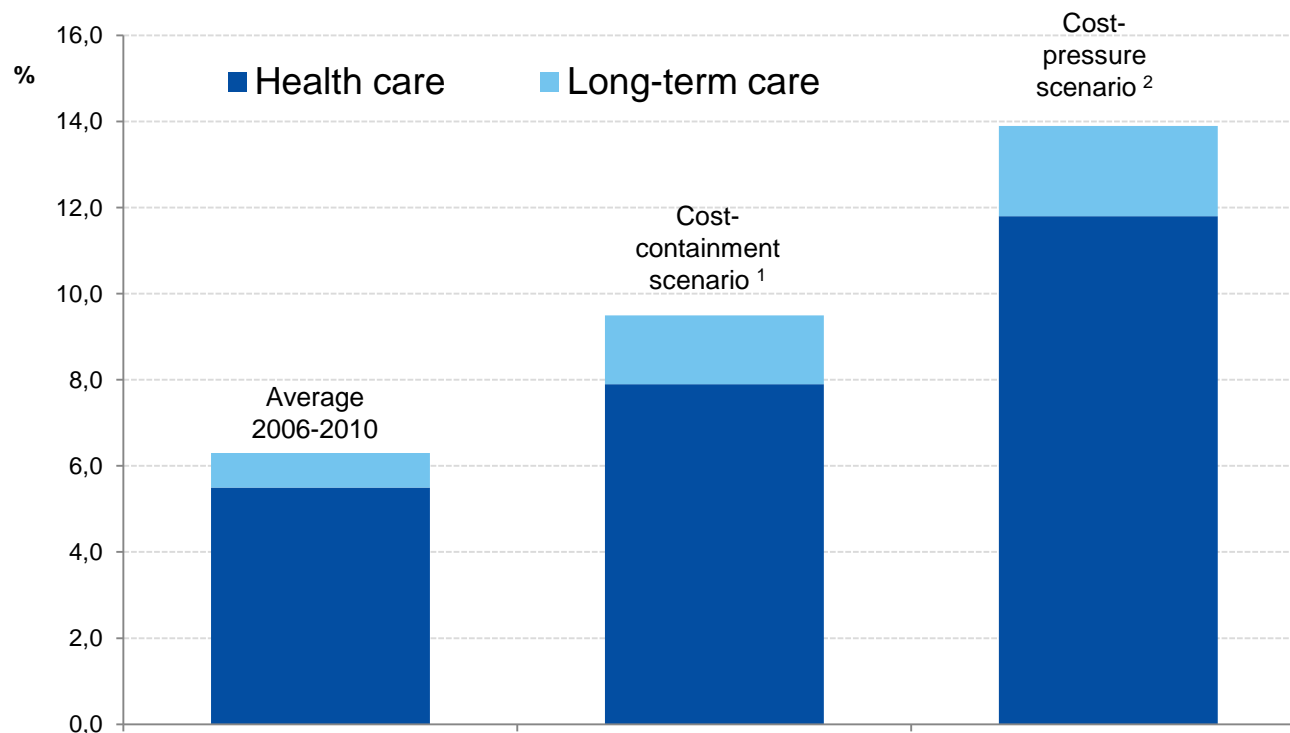
Healthcare expenditure by age

Shares of healthcare expenditure by age in total healthcare expenditure



How healthcare costs are rising

Projected public health and long-term care expenditure in the OECD countries as a % of GDP, in 2060



1 The cost-containment scenario assumes that policies act more strongly than in the past to rein in some of the expenditure growth.

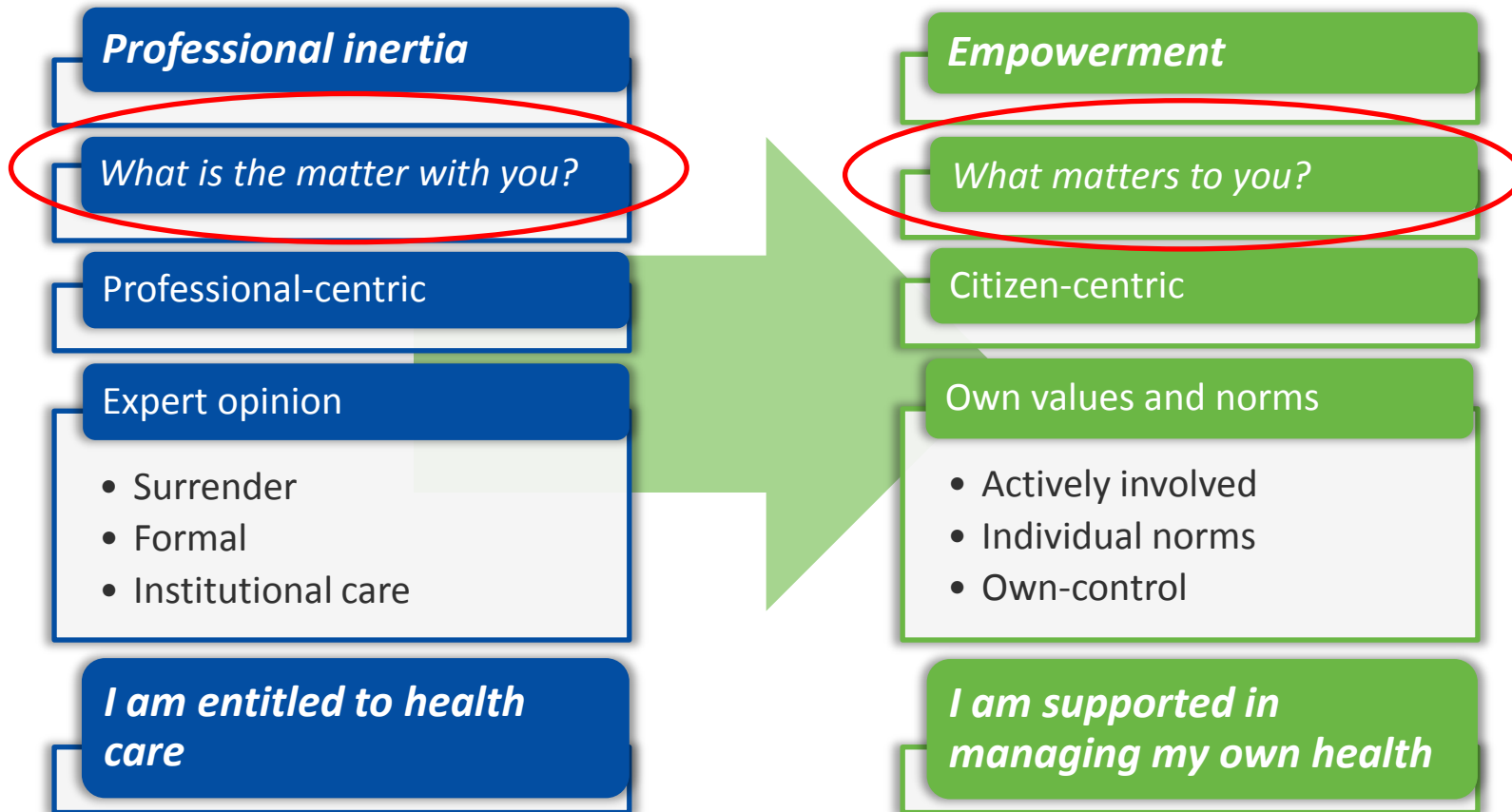
2 The cost-pressure scenario assumes no stepped-up policy action.

We focus on the opportunity

- *To increase competitiveness of EU industry*
- *To provide better health to citizen*
- *And create sustainable health care*

Created by an ageing population

A paradigm shift is needed





Our mission:
**EIT Health promotes entrepreneurship
and innovates in healthy living and
active ageing, with the aim to improve
quality of life and healthcare across
Europe.**

Connecting high potential areas with integrated innovation processes

Promote Healthy Living

Self-management of health

Enable people to take charge of their own health

Lifestyle intervention

Support Active Ageing

Workplace interventions

Optimise the physical working environment

Overcoming functional loss

Improve Healthcare

Improving healthcare systems

Establish integrated care solutions in home and clinical settings

Treating and managing chronic diseases



Business Objectives



Examples

Our ambitions for 2016



Deliver tangible results

19 new products

70 business ideas incubated

700 health professionals
trained

> 150,000 participants in EIT
Health MOOCs

Build connections

**Linkages between CAMPUS,
ACCELERATOR and PROJECTS**

**Users/patients in
innovation activities**

Payers to engage in EIT
Health

Communication:
external/internal

Develop our organisation

**Strengthening the
partnership**

**Establish a strategic process
for 2017 Business Plan**

**Strategic portfolio of
transformational innovation**

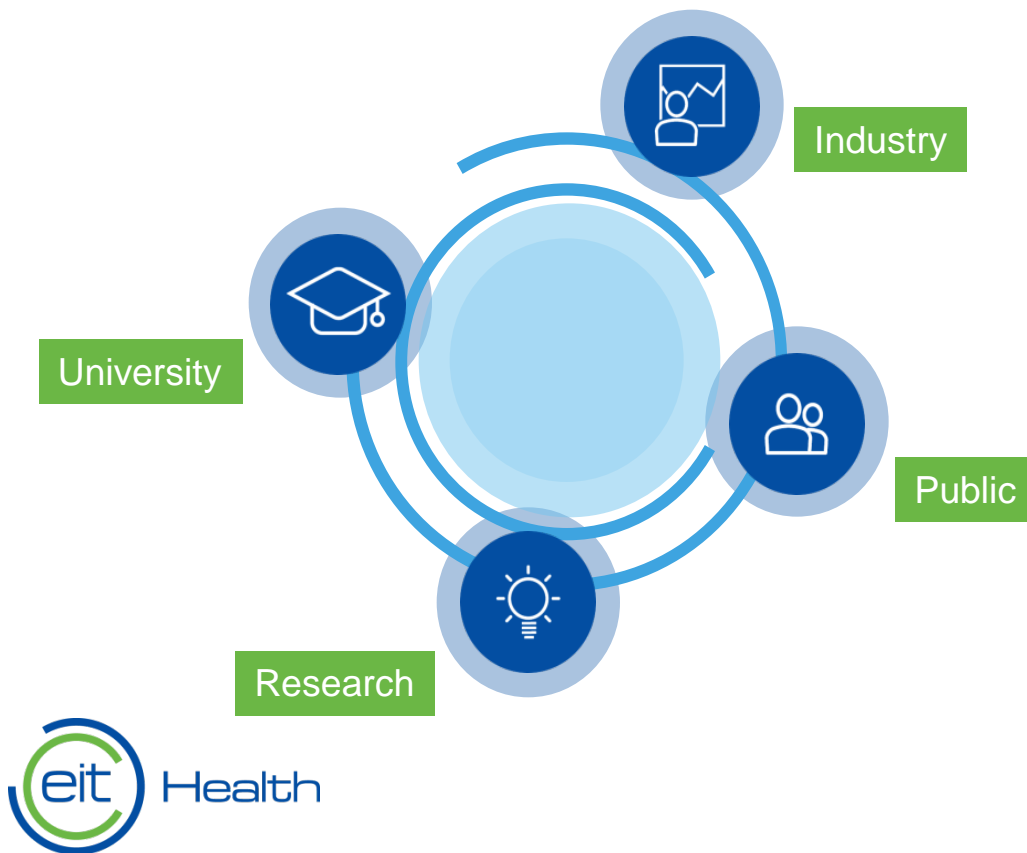
**Grow capabilities and
double portfolio size in 2017**

WHY?

us

EIT Health: leveraging the potential

One of the largest healthcare initiatives worldwide with more than **130 leading organisations**, covering all areas of healthcare.



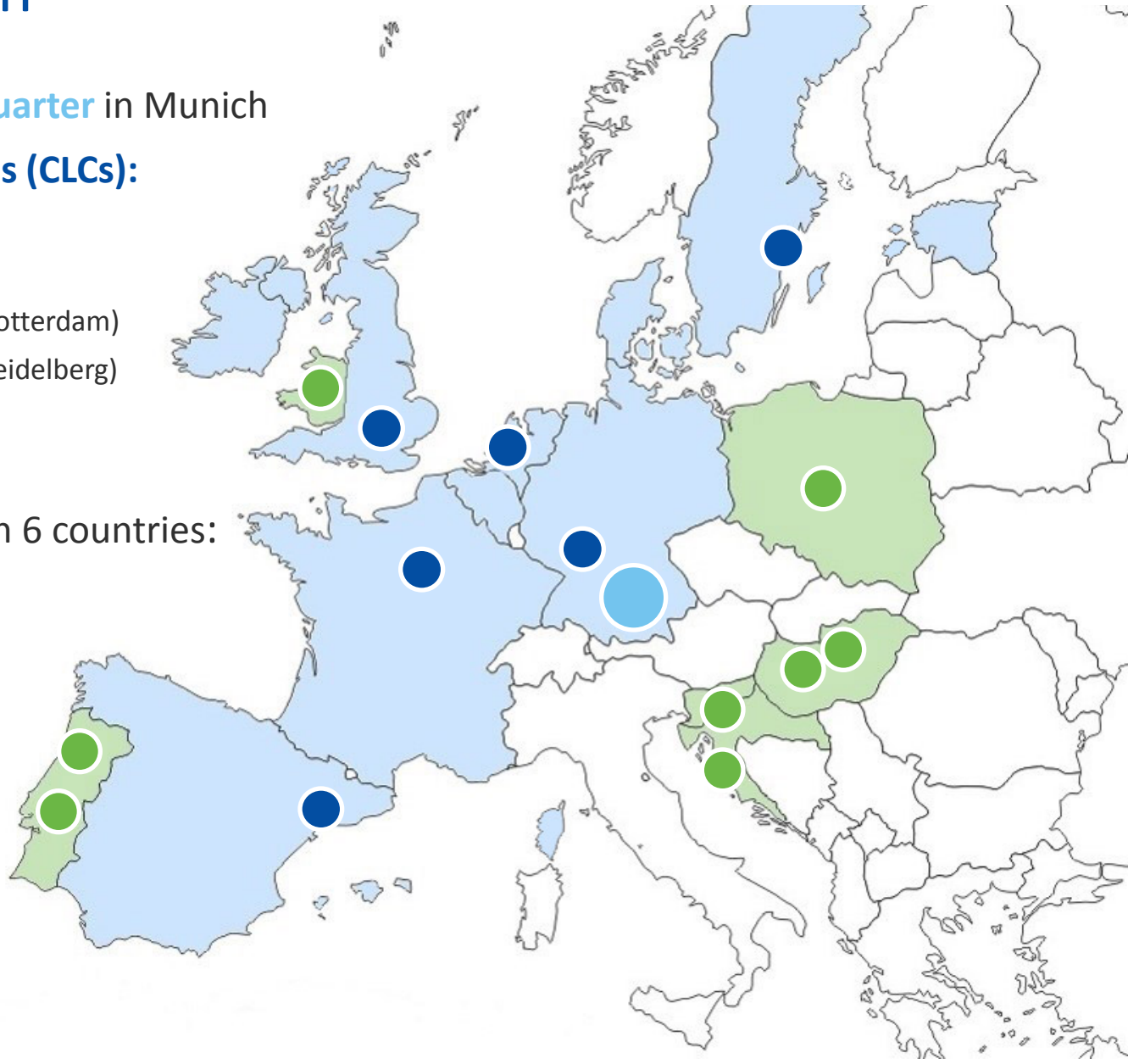
EIT Health

- invests in Europe's **best entrepreneurial talents and creative minds**
- fosters the development and commercialisation of **smart product and service solutions**

European reach

- **International Headquarter** in Munich
- **6 Co-Location Centres (CLCs):**
 - UK/Ireland (London)
 - Scandinavia (Stockholm)
 - Belgium/Netherlands (Rotterdam)
 - Germany (Mannheim/Heidelberg)
 - France (Paris)
 - Spain (Barcelona)
- **8 InnoStars regions** in 6 countries:
 - Croatia
 - Hungary
 - Poland
 - Portugal
 - Slovenia
 - Wales

- **Co-location centres**
- **InnoStars regions**
- **International HQ**



A strong partnership across Europe

CLC UK/Ireland



CLC Belgium/Netherlands



CLC Spain



CLC France



CLC Scandinavia



CLC Germany

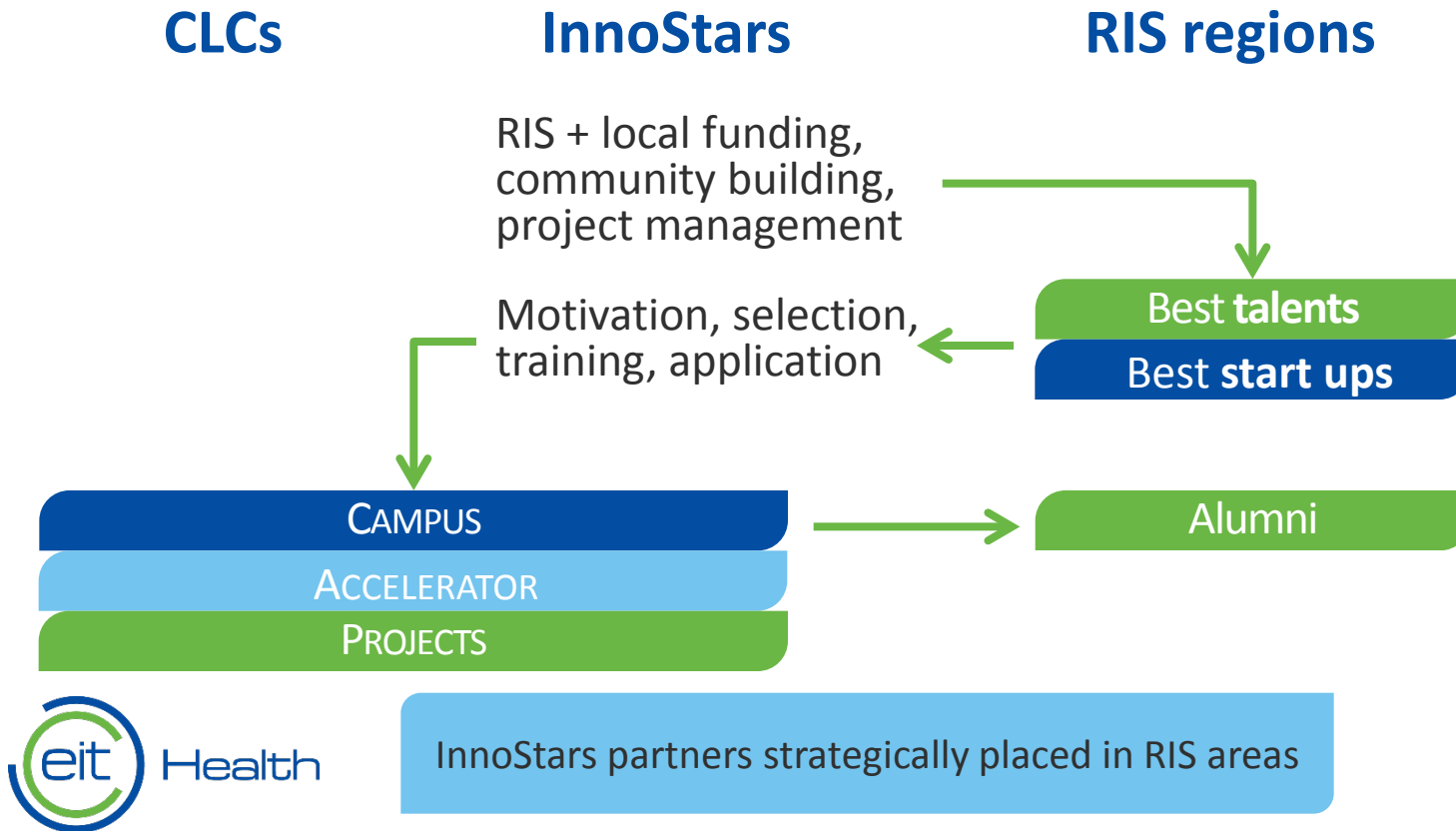


InnoStars

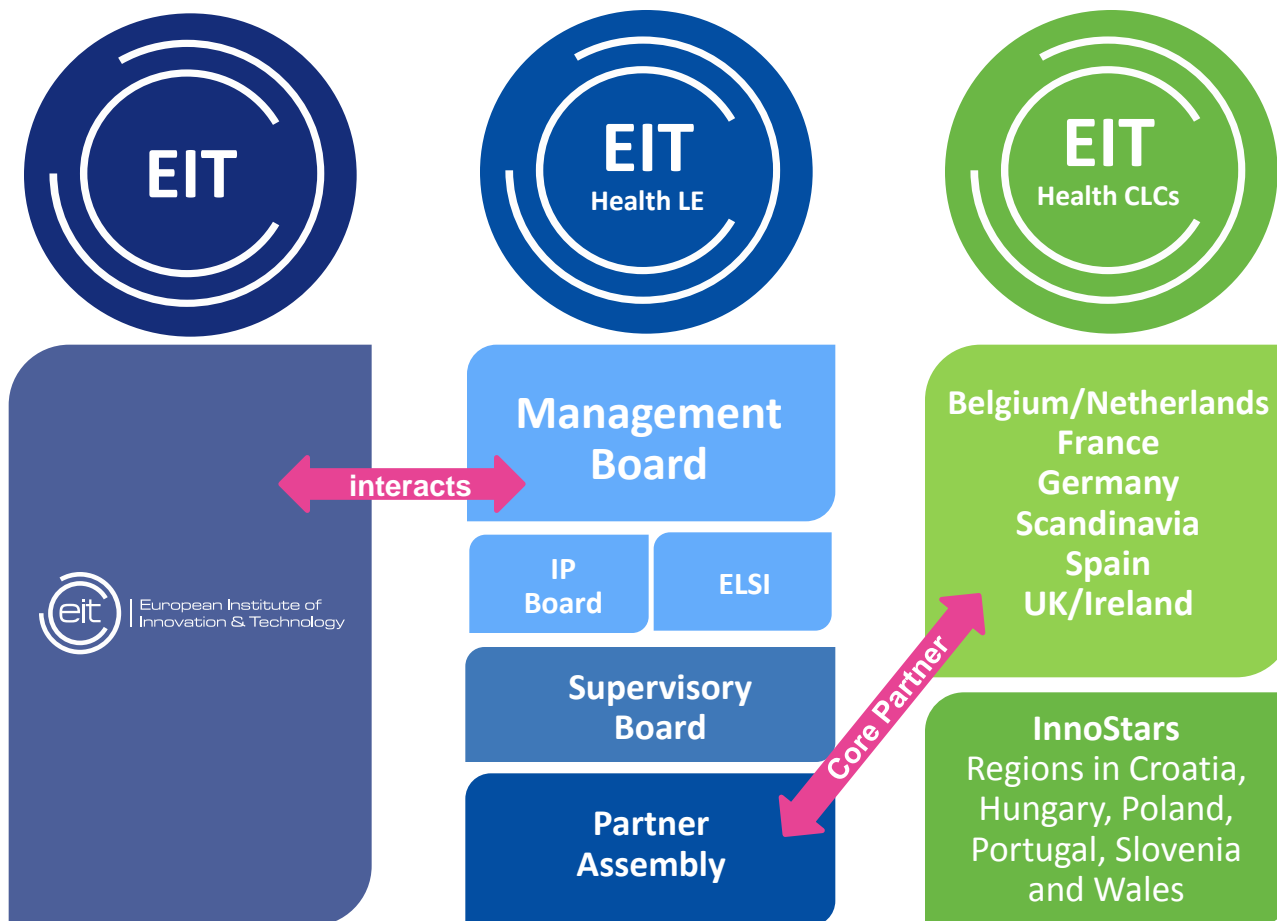


RIS – new ideas and talents from the periphery

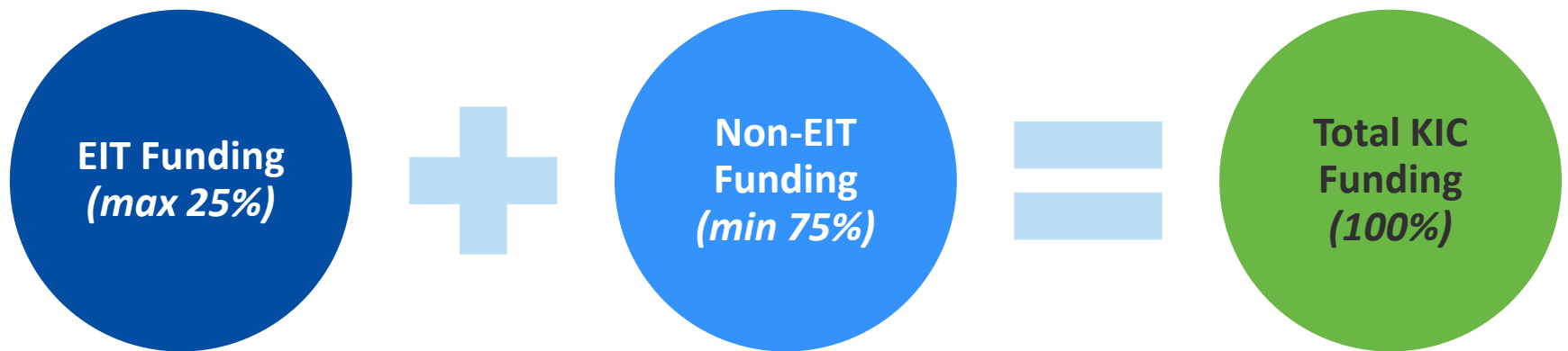
RIS activities through InnoStars



How EIT Health is organised



Leveraging and pooling resources



Membership fees:

Core partner: 75,000 EUR p.a.

Associate partner: 25,000 EUR p.a.

Imperial College: partner of EIT Health



Prof. Elio Riboli

Director School of
Medicine, Imperial College
London

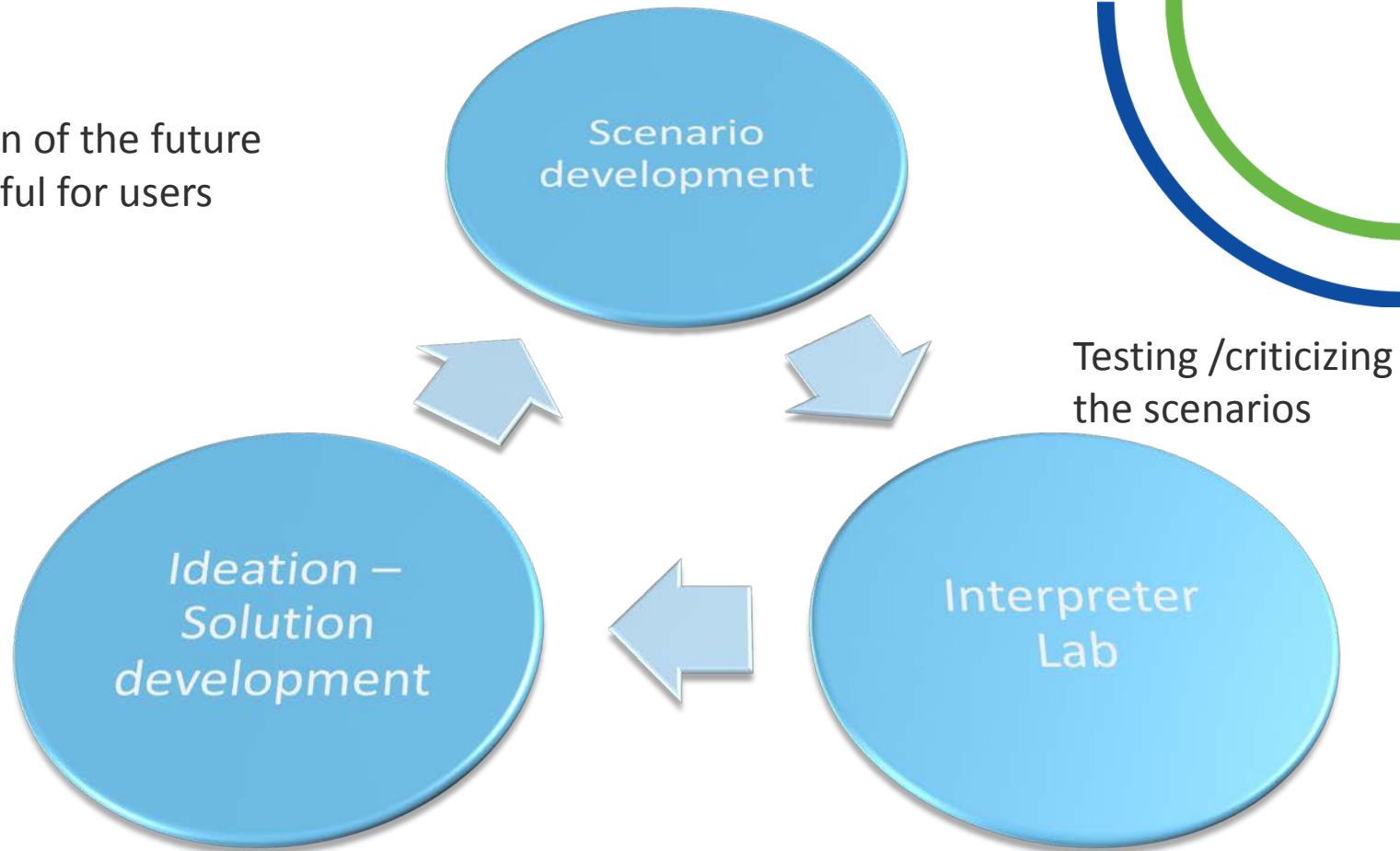
“EIT Health covers the whole spectrum from basic research to the translation of this knowledge into products and services, which eventually will become available to the general public and patients.”

HOW?

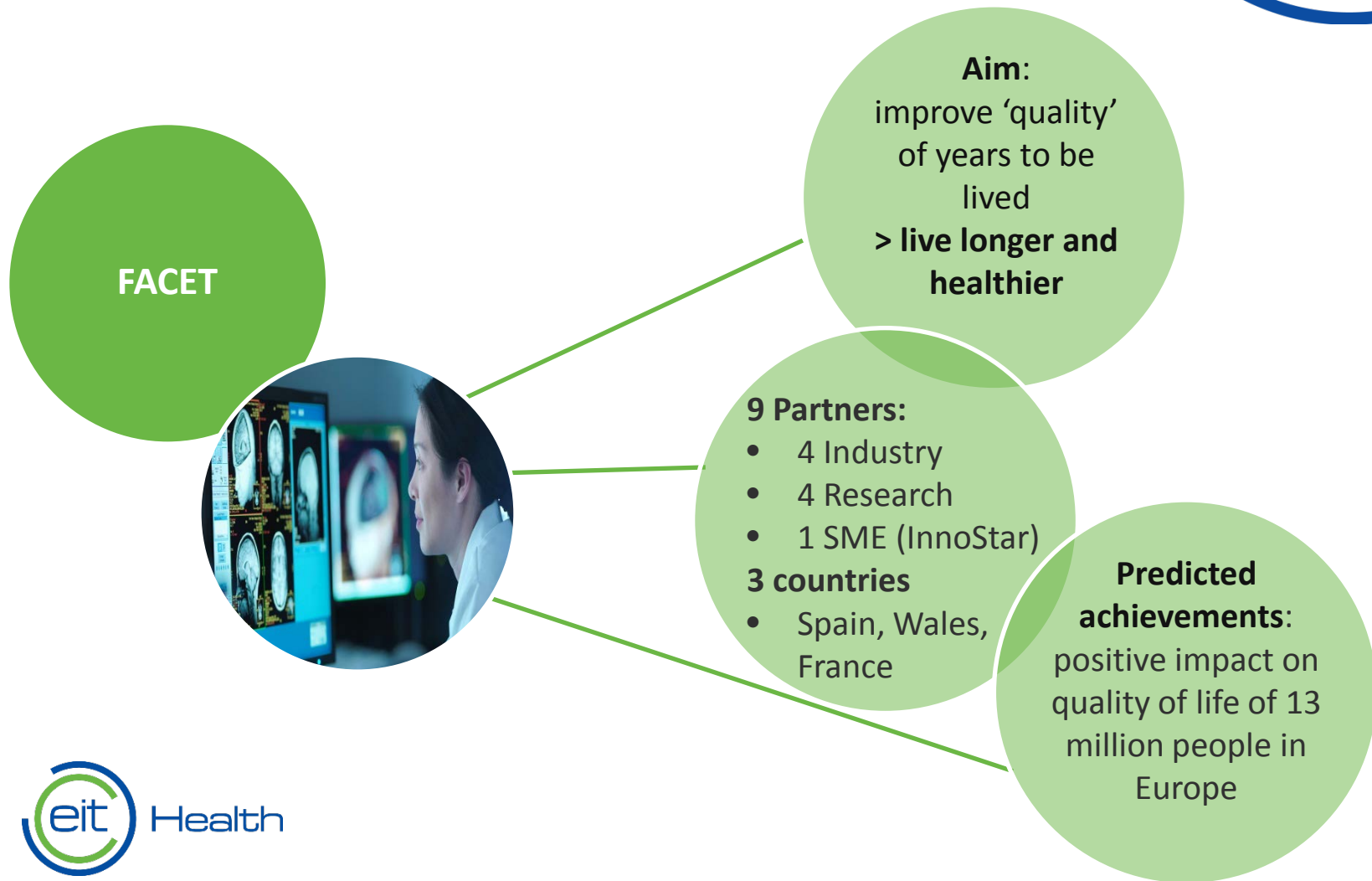
To make it happen

Transformational Innovation Platform

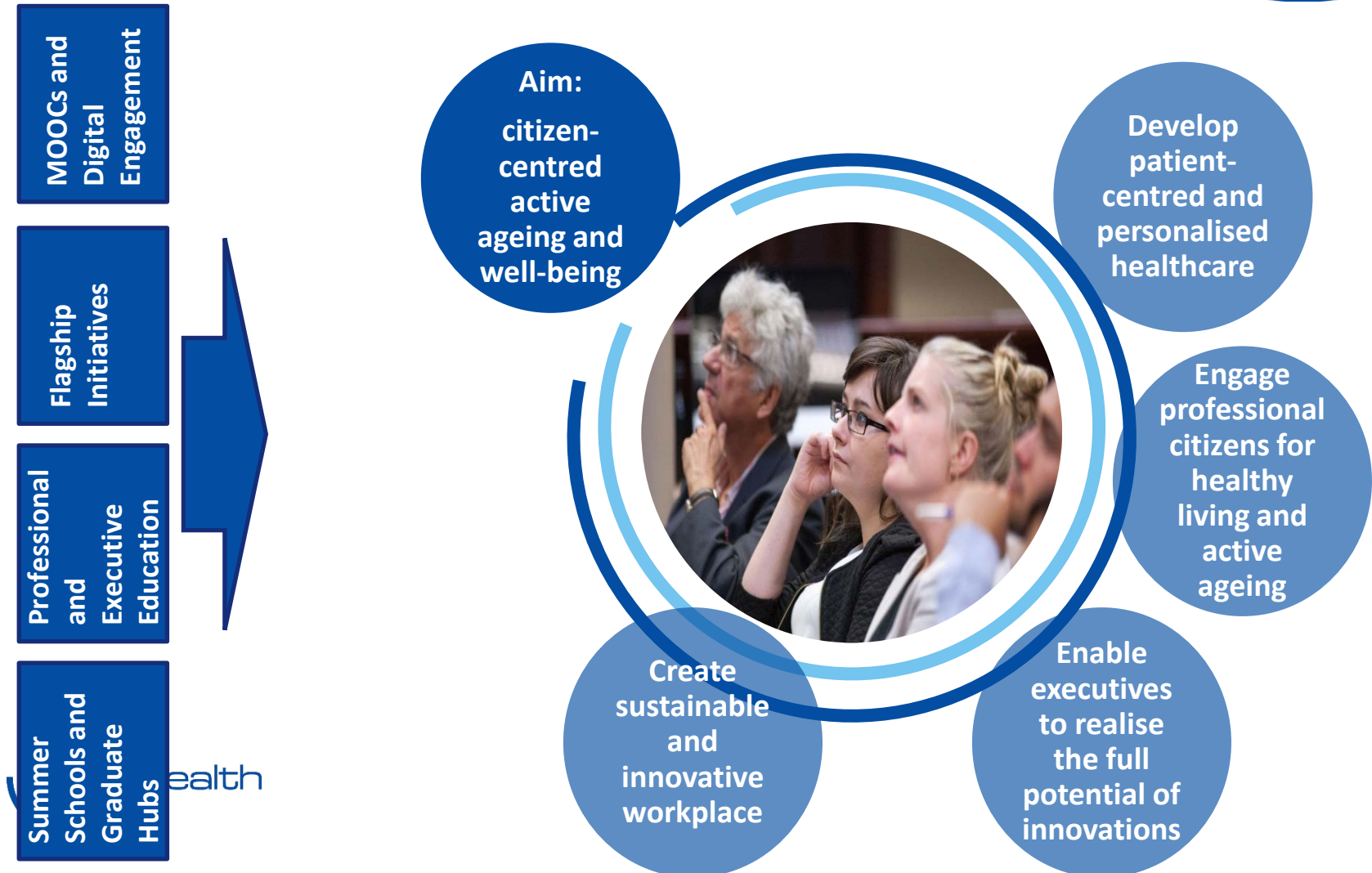
Our vision of the future
Meaningful for users



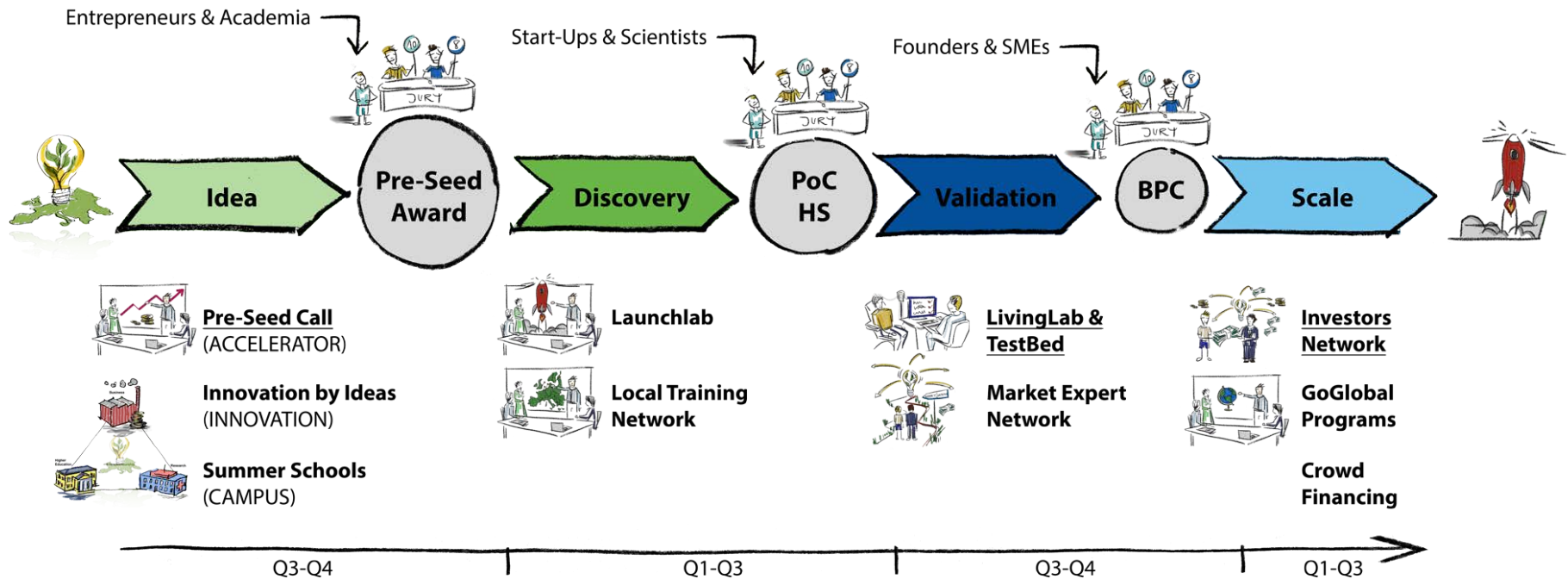
Innovation: one example



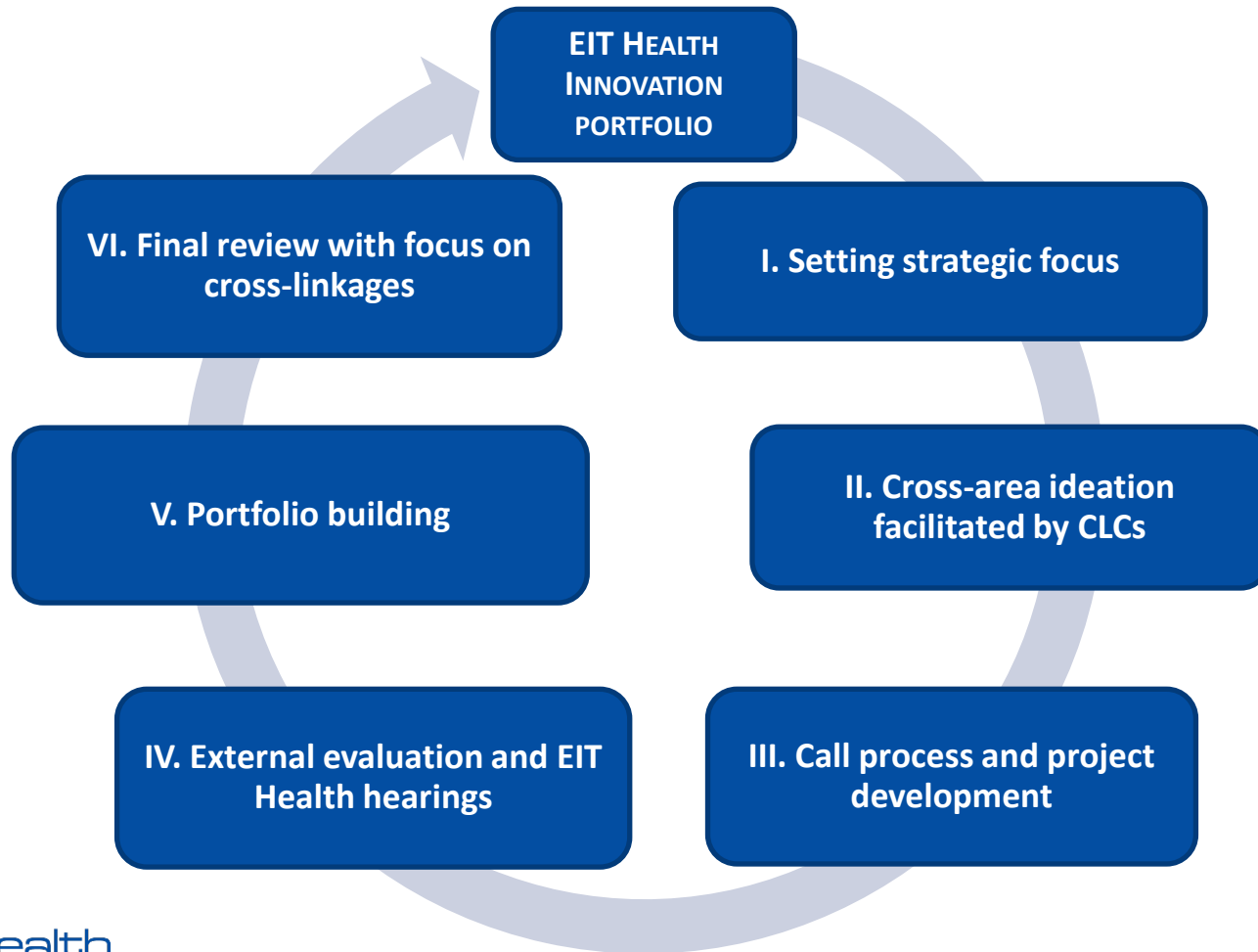
CAMPUS: education of professionals and executives is a key education component



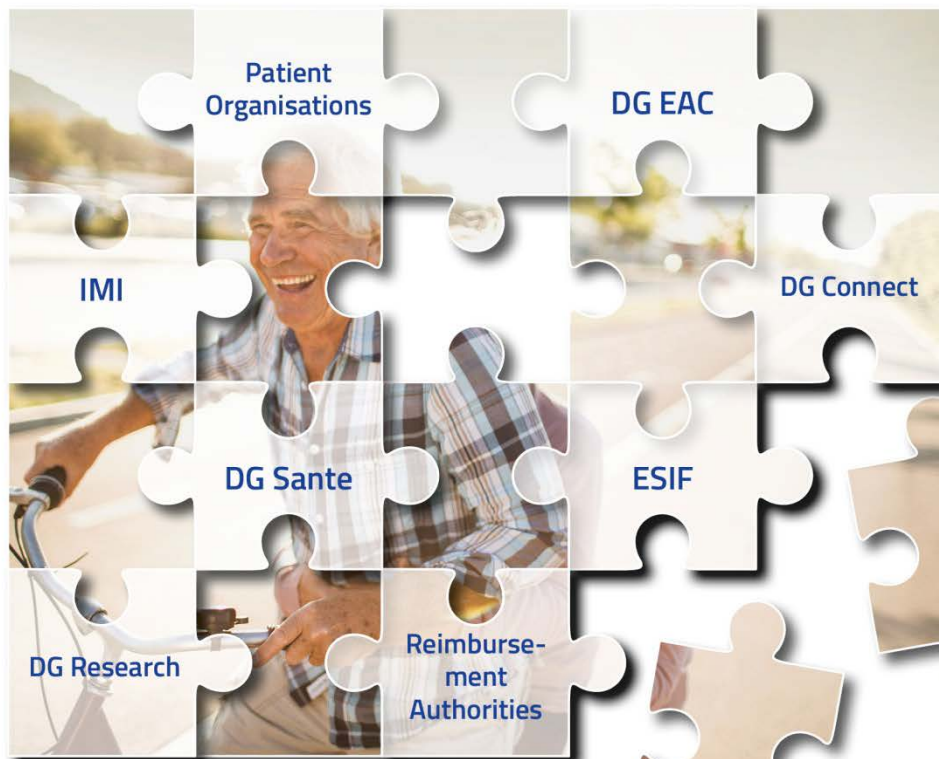
Accelerator Supply Chain



Competitive selection process



European synergies for health



EIT Health – a powerful alliance



EIT matters

EIT Health matters

Health matters





eithealth.eu

Thank you!



EIT Health is supported by the EIT,
a body of the European Union

<https://twitter.com/eithealth>

www.facebook.com/eithealth

www.linkedin.com/company/eithealth